

## 【 CiRA-j-1190 】 Morphology of iPSC colonies

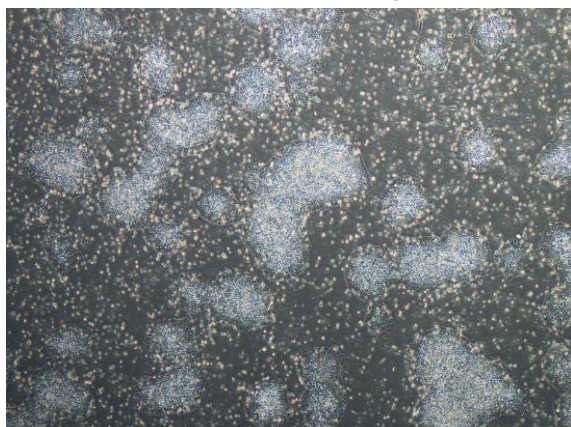
CiRA-j-1190-A: passage-3



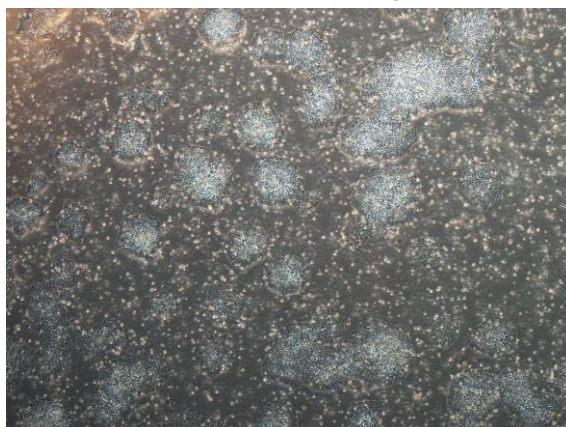
CiRA-j-1190-B: passage-3



CiRA-j-1190-C: passage-3



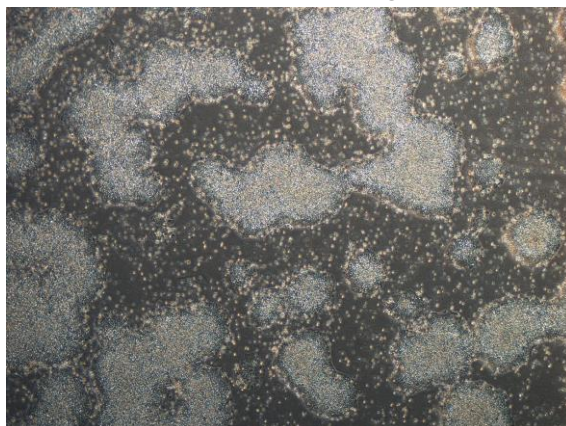
CiRA-j-1190-D: passage-3



CiRA-j-1190-E: passage-3



CiRA-j-1190-F: passage-3



( All images were captured at 4x magnification )